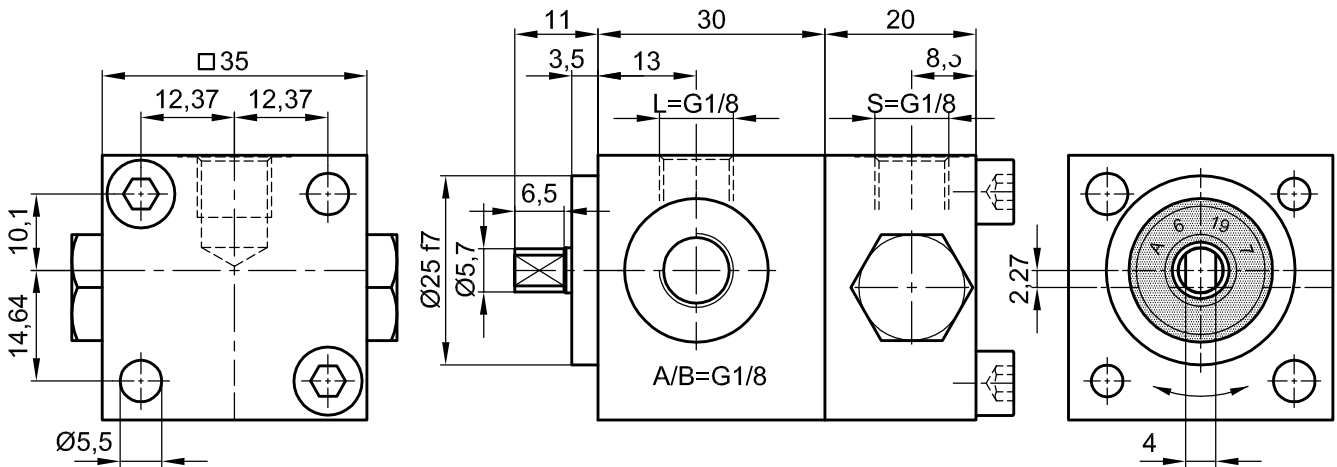


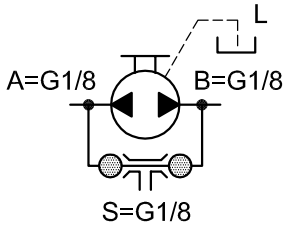
Reversal Pump IPZ 0 - HRL2-S Standard with 0,06 ccm/RPM

Standard Design with Separate Leakage Oil Connection (L)
(Customized Design on Request)



Mounting: DIN 912-M5x60-8:8, Tightening Torque: 8 Nm

Symbol:



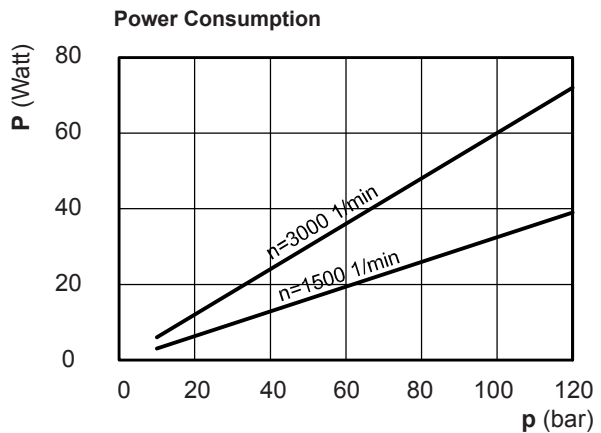
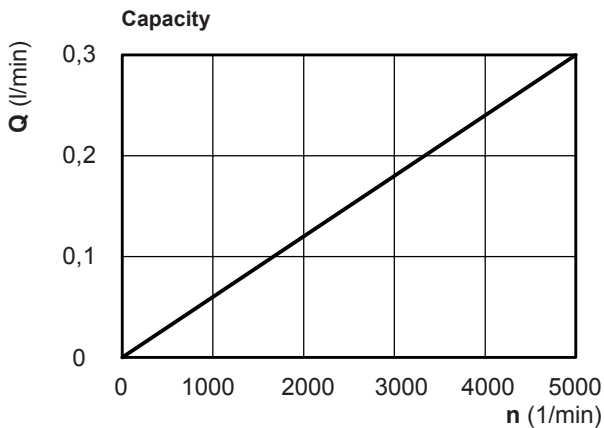
The technical data are based on a viscosity of 46 sq mm/s

ccm/ rpm	Press./bar max.		RPM max.		RPM min.	Mass	Order No.
	P1	P max	Press. P1	Depress.	Press. P1		
0,06	70	100	4000	5000	1000	430 g	10022-141

P1 = Working Pressure max. P max. = Pressure Peak

Working Pressure / bar						
Capacity at 1.500 RPM (l/min)						
Power Consumpt./W at 1.500 RPM						
bar	10	20	40	60	80	100
l/min	0,09	0,09	0,09	0,09	0,09	0,09
Watt	3	6	12	18	24	30

Working Pressure / bar						
Capacity at 3.000 RPM (l/min)						
Power Consumpt./W at 3.000 RPM						
bar	10	20	40	60	80	100
l/min	0,18	0,18	0,18	0,17	0,17	0,16
Watt	6	12	24	36	48	60



Please specify Pressure, RPM, Temperature, Gain and the Duty Cycle by ordering!



Jung-Fluidtechnik GmbH
Mohrenstrasse 7
D-76275 Ettlingen

Phone +49 (0) 7243-14648
Fax: +49 (0) 7243-17996
E-Mail: info@jung-fluid.de

Data Sheet

IPZ 0 - HRL2-S
subject to modifications