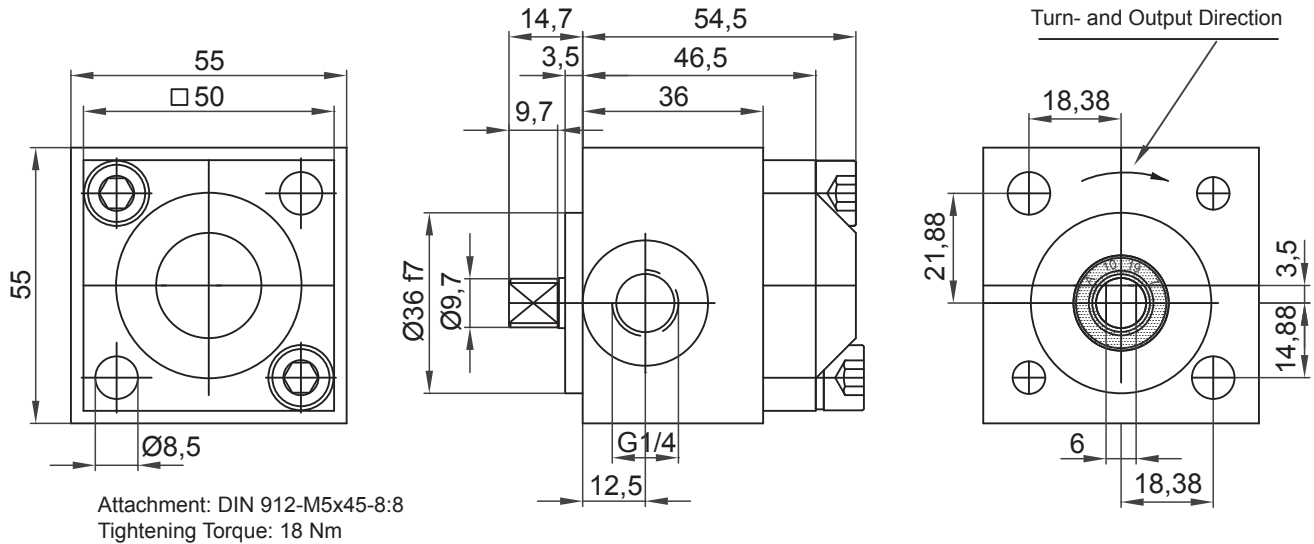


Internal Gear Driven Pump IPZ 2 - HR 16 Standard with 2,32 ccm/RPM

Default Design (Clockwise Shaft Rotation Viewed)



Symbol:



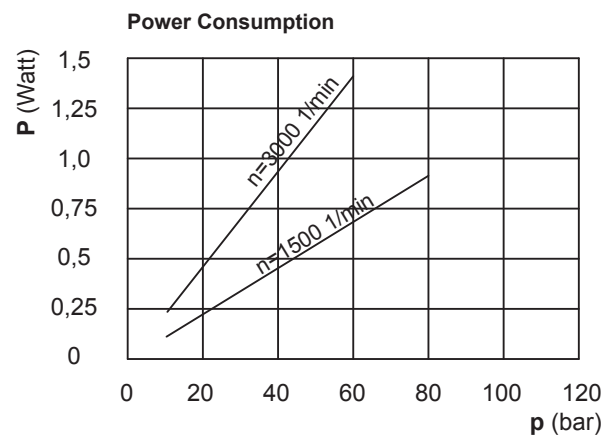
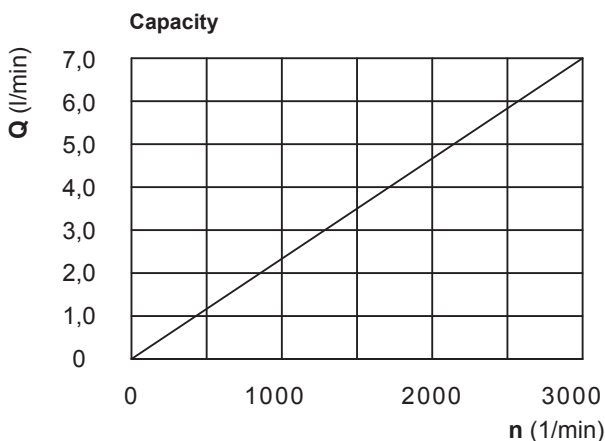
The technical data are based on a viscosity of 46 sq mm/s

| ccm/ rpm | Press./bar max. | | RPM max. | | RPM min. | Mass | Order No. |
|-------------|-----------------|-------|-----------|----------|-----------|-------|-----------|
| | P1 | P max | Press. P1 | Depress. | Press. P1 | | |
| 2,32 | 40 | 80 | 2000 | 3000 | 800 | 875 g | 10010-143 |

P1 = Working Pressure max. P max. = Pressure Peak

| Working Pressure / bar | | | | | | | |
|--------------------------------|------|------|------|------|------|-----|-----|
| Capacity at 1.500 RPM (l/min) | | | | | | | |
| Power Consumpt./W at 1.500 RPM | | | | | | | |
| bar | 10 | 20 | 40 | 60 | 80 | 100 | 120 |
| l/min | 3,4 | 3,4 | 3,3 | 3,3 | 3,2 | | |
| kW | 0,12 | 0,24 | 0,47 | 0,70 | 0,93 | | |

| Working Pressure / bar | | | | | | | |
|--------------------------------|------|------|------|------|----|-----|-----|
| Capacity at 3.000 RPM (l/min) | | | | | | | |
| Power Consumpt./W at 3.000 RPM | | | | | | | |
| bar | 10 | 20 | 40 | 60 | 80 | 100 | 120 |
| l/min | 6,9 | 6,8 | 6,8 | 6,7 | | | |
| kW | 0,24 | 0,47 | 0,93 | 1,40 | | | |



Please specify Pressure, RPM, Temperature, Gain and the Duty Cycle by ordering!



Jung-Fluidtechnik GmbH
Mohrenstrasse 7
D-76275 Ettlingen

Phone +49 (0) 7243-14648
Fax: +49 (0) 7243-17996
E-Mail: info@jung-fluid.de

Data Sheet

IPZ 2 - HR 16
subject to modifications