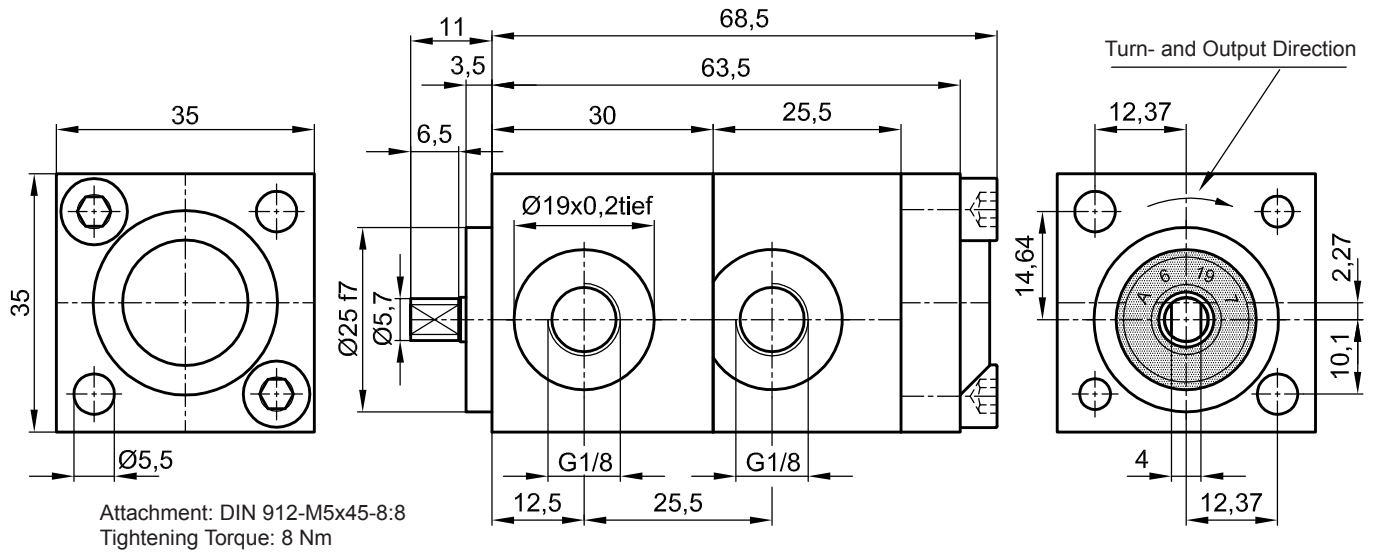


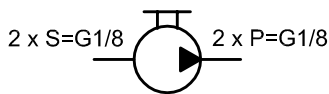
Internal Gear Driven Pump IPZ 1 - HR 10 Double with 2 x 0,60ccm/RPM

Default Design (Clockwise Shaft Rotation Viewed)



The technical data are based on a viscosity of 46 sq mm/s

Symbol:

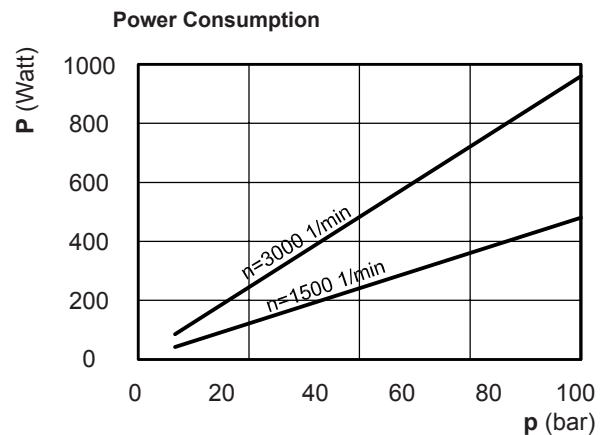
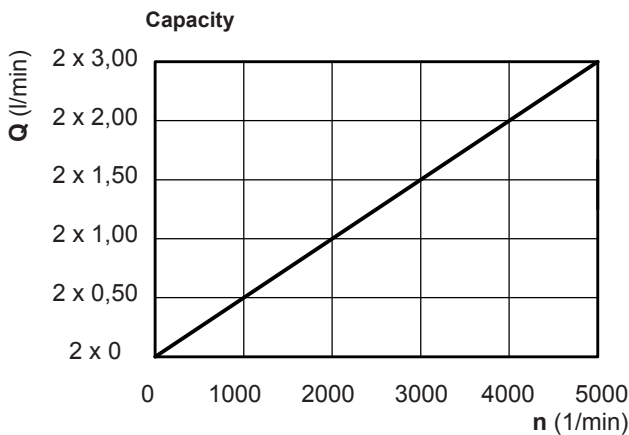


ccm/ rpm	Press./bar max.		RPM max.		RPM min.	Mass	Order No.
	P1	P max	Press. P1	Depress.	Press. P1		
2 x 0,60	70	100	4000	5000	1000	500 g	30082-142

P1 = Working Pressure max. P max. = Pressure Peak

Working Pressure / bar					
Capacity at 1.500 RPM (l/min)					
Power Consumpt./W at 1.500 RPM					
bar	2x10	2x20	2x40	2x60	2x80
l/min	2x0,89	2x0,88	2x0,85	2x0,80	2x0,73
Watt	60	120	240	360	480

Working Pressure / bar					
Capacity at 3.000 RPM (l/min)					
Power Consumpt./W at 3.000 RPM					
bar	2x10	2x20	2x40	2x60	2x80
l/min	2x1,79	2x1,78	2x1,75	2x1,70	2x1,63
Watt	120	240	480	720	960



Please specify Pressure, RPM, Temperature, Gain and the Duty Cycle by ordering!



Jung-Fluidtechnik GmbH
Mohrenstrasse 7
D-76275 Ettlingen

Phone +49 (0) 7243-14648
Fax: +49 (0) 7243-17996
E-Mail: info@jung-fluid.de

Data Sheet

2x IPZ 1-HR 10
subject to modifications